

TMJ Splints

Johns Dental has become proficient in constructing a variety of splints tailored to the specific needs of your patient.

Transitional, flat plane and pivotal splints are available as well as several long-term, phase II options including the Anodyne Bite Restorer, crown and bridge and orthodontics.

Ask for our TMJ Splint brochure for a complete look at all of our splint-related services.



Anodyne Bite Restorer

The Anodyne Bite Restorer, or Over-Partial, is one popular phase II options that solves TMD problems. This reversible procedure allows the option to move your patient into crown and bridge or orthodontics later.

The Wironium framework and composite dentition combination works very well when correcting the patient bite.



We also have several technical bulletins available for many of our appliances and prosthetics. Please feel free to ask us for any additional information.



Jay Coffman
TMJ Splint & Sleep Apnea
Supervisor



Is your patient in pain?

If you have a patient in pain, call Jay in advance and he will prioritize your case. We can turn most splints around in three working days.

Allergy Concerns

As demand increases among allergy-conscious patients, you'll be happy to know that for over a decade Johns Dental has used the "Clifford Test" to guide us in selecting materials best suited for your patients.

Johns Dental has additional experience working with "Clifford Clinical Research" (CCR) and "Scientific Health Solutions, Inc." in order to utilize bio-compatible materials that provide the best results for your patients.



Look for JohnsDentalLab on Facebook and Twitter for appliance & prosthetic updates and pricing specials.

www.johnsdental.com • 800/457-0504 • Terre Haute, Indiana

Partial Denture



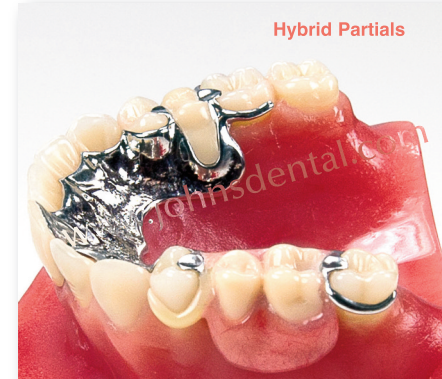
Acetal-Resin Clasps

Acetal-Resin restorations are still a popular solution at Johns Dental because so many patients prefer an aesthetic partial. Acetal-Resin offers a variety of tooth and tissue shades available to match clasps, bridges and more. It can also be used with or without our Wironium metal framework offering endless possibilities.



Flexible Partials

Flexible partials is ideal for partial dentures and unilateral restorations. The resin is a bio-compatible thermoplastic with unique physical and aesthetic properties. This exciting lightweight material allows the patient's natural tissue tone to show through.



Hybrid Partials

Our Hybrid partials consist of a variety of materials specified by you to solve your patient's unique dental problems. Strength? Flexibility? Aesthetics? Cost? They are all controlled by you. Call us to discuss your next case.



Mona Keiser
Co-Supervisor Partials



Kelly Livingston
Co-Supervisor Partials

Denture

Virginia Band

Aside from our traditional dentures available at a variety of price points, many doctors have found tremendous success with the Virginia Band made in our denture department. The Virginia partial is a tissue-born, acrylic-based denture that utilizes the Luci-Sof silicone band around the remaining teeth to provide gentle, but effective retention and support.

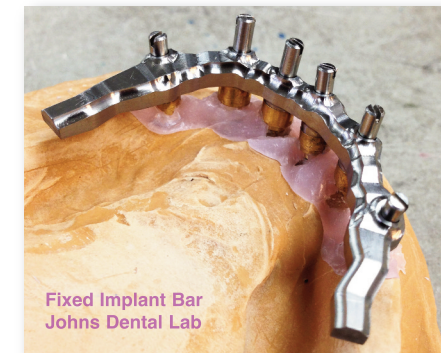
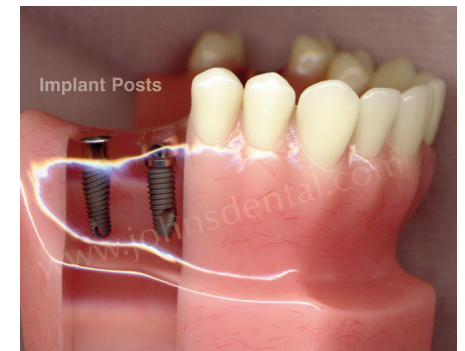
Implant & Attachment



Implants & Attachments

For your patients who want the very best restorations, our implant and attachment department can help with a beautiful and long lasting solution.

Johns Dental uses all systems available today for a natural looking restoration. Call us with your case questions.



Jeff Wilkinson, CDT
General Lab Supervisor

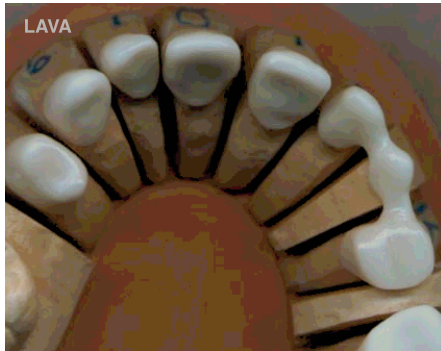


www.johnsdental.com • 800/457-0504 • Terre Haute, Indiana

©Johns Dental Copyright 2015

Our Crown & Bridge technology continues to provide you and your patients with several great options.

The following crowns and bridges are just a few of the services we offer. We continue to add new proven techniques so you can meet client demand. Please feel free to call us with any of your crown and bridge/porcelain case questions.



LAVA

Standard PFM preps are all that are required for LAVA™ crowns. The photo above shows (copings only) in a combination case using single units and a 3-unit bridge for a complete metal-free restoration.

Allergy Concerns

As demand increases among allergy-conscious patients, you'll be happy to know that for over a decade Johns Dental has used the "Clifford Test" to guide us in selecting materials best suited for your patients.

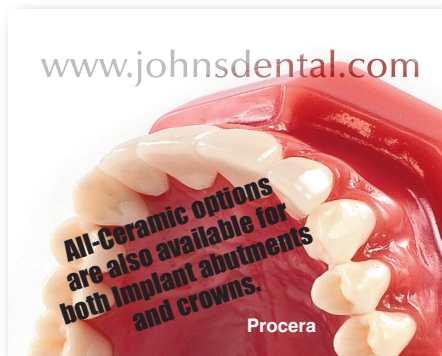


Jeff Wilkinson, CDT
Crown & Bridge / Porcelain
Implant & Attachment Supervisor



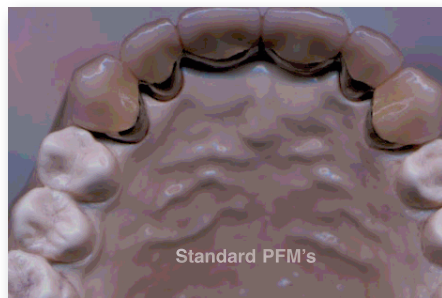
Full Zirconia (Full contour crown)

Full contour zirconia restorations are increasing in the industry due to their strength and consistency. There isn't a core and porcelain combination, so it's strength allows us to create great looking crowns even if the preps are thin.



PROCERA ALLCERAM

This cementable, all ceramic crown offers maximum strength and natural esthetics for posterior and anterior applications. In addition, **Procera AllZircon** offers a stronger coping which enables it to withstand posterior demands.



Standard PFM's

Even with all the new materials and technology, we are still known for great porcelain-fused-to-metal crowns and bridges.



We've been fabricating sleep appliances since the late 1980's.



EMA (Elastic Mandibular Appliance)



TAP Sleep apnea family



Herbst Sleep appliance (with one piece hinge)



The Silencer



The OASYS

Experience matters when fabricating sleep appliances and we have been growing along with this demand since the 1980's. Trust an experienced sleep apnea laboratory. To learn more about each of our sleep appliances go to: www.johndental.com.



FULL SERVICE

JOHNS DENTAL LABORATORIES



TMD
Sleep Apnea
Orthodontics
Crown & Bridge
Denture - Partial Denture
Implant & Attachments

Proudly made in the U.S.A. and only with F.D.A. approved materials!



Look for **JohnsDentalLab** on Facebook and Twitter for appliance & prosthetic updates and pricing specials.