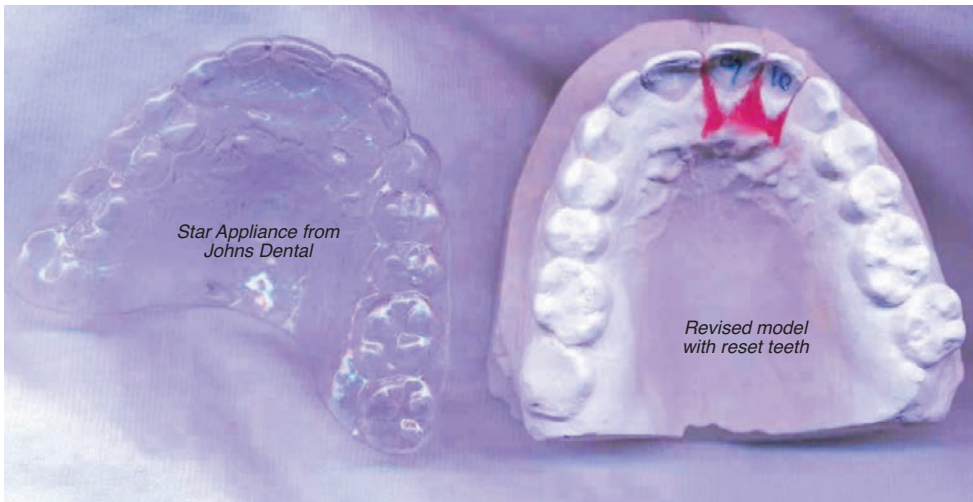


Correct minor rotation and lingual tipping through interchangeable trays



Shown here is the adjusted model and the Star appliance made to fit the patients next treatment step.

The Star System from Johns Dental

The Star appliances from Johns Dental provides subtle, yet constant tooth pressure to encourage minor tooth movement.

Patients love them because they are almost undetectable, which reduces patient compliance issues.

Tips for best success

Star appliances are best suited for minor tooth rotation and labial and lingual tipping. This orthodontic treatment system is not recommended for moving teeth along the arch. Tooth movement should also be limited to anterior teeth.

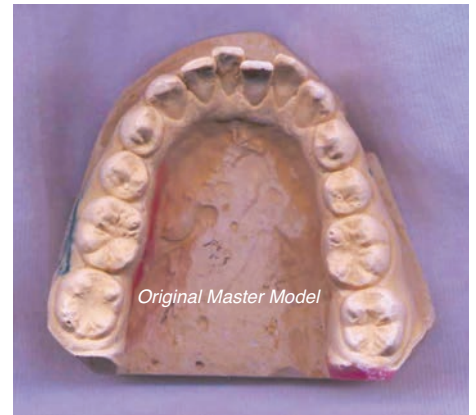
For best results, remove brackets and send upper and lower models along with a prescription indicating which teeth are to be moved.

Over 25 Years of Success

Johns Dental has been fabricating these clear appliances for over 25 years. The Star orthodontic system is somewhat specialized and can be a great option for those patients who want to conceal their orthodontic treatment.

Tray Options

Using only one model, Johns Dental can make 1, 2 or 3 trays, depending on the amount of tooth movement required. Additional trays can be fabricated from subsequent impressions if needed.



All trays are made from master models like this one shown above. We can make up to 3 trays which covers approximately three months of treatment time.



This work in progress case had 6 steps created from two master models. Notice how the arch gradually improves from the first tray (upper left) to the last tray (lower right).



Serving the Dental Profession since 1939

423 South 13th St.
Terre Haute, IN 47807
Toll Free: 800/457-0504
Local: 812/232-6026
Fax: 812/234-4464
Website: www.johndental.com

Copyright 2008